



Case Study

SKH Management Strategy Services India LLP,
Gurgaon
EMAAR Capital One, Gurgaon.



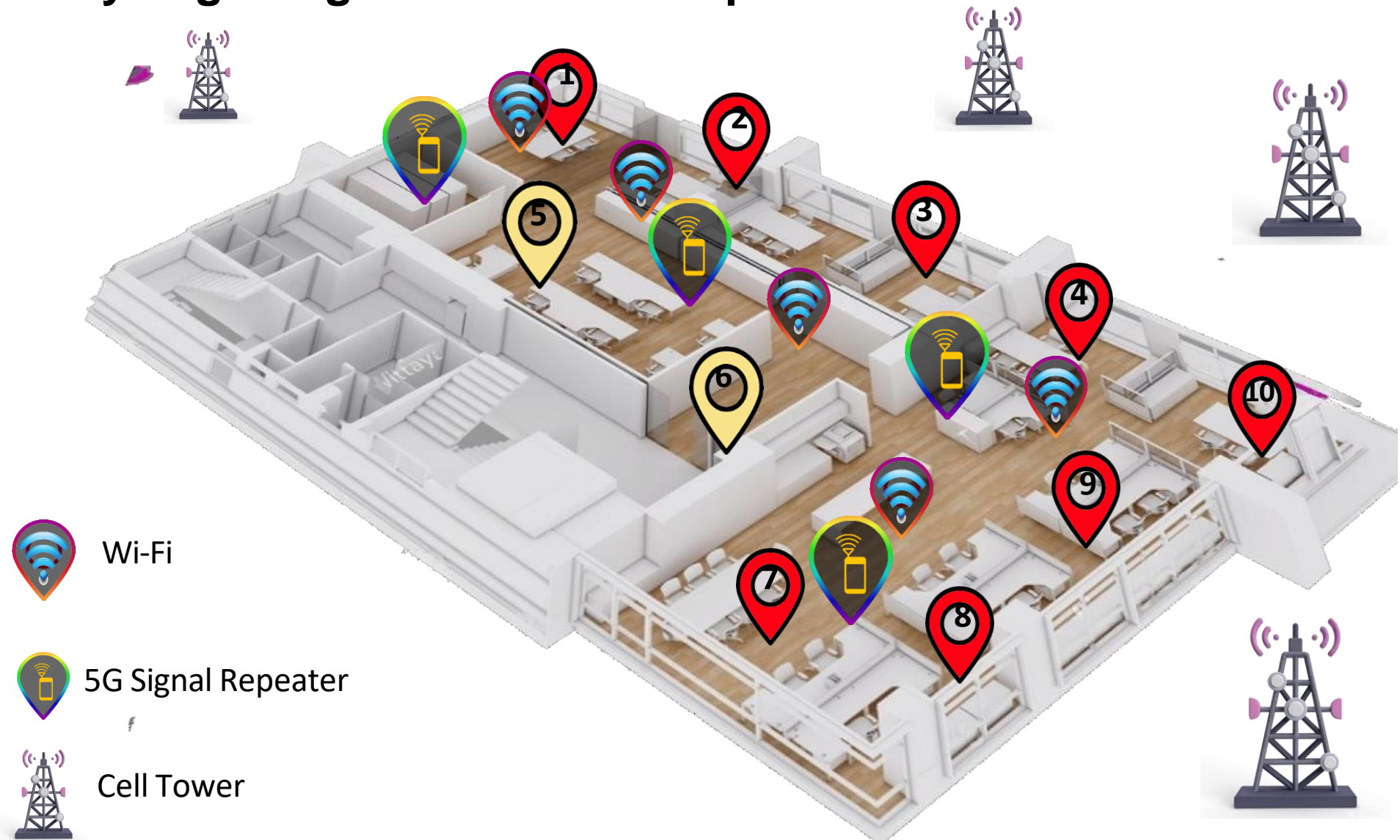
100% Signals
0% Connectivity

Premium Office Space



Exposure was Extremely High!

Very High Signals from Multiple Directions Observed at all Locations



Sl no	Location	Max
1	Vinod	9966
2	IKIGAI	13791
3	Marketing	12326
4	Finance	15810
5	Sumit	1626
6	Manjit	1482
7	Vijay	19985
8	Dharam	36350
9	Rajeev	35660
10	Manish	72360

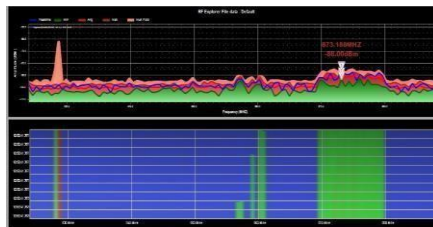
Smorgasbord of Wireless Radiation!



Band 1



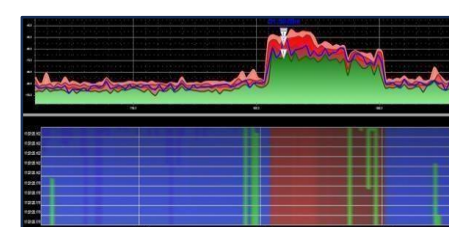
Band 3



Band 5



5G n1



5G n3



Band 7



Band 8



Band 28



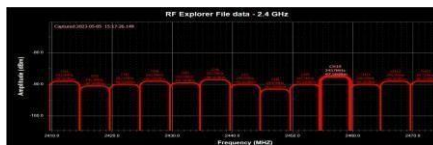
5G n8



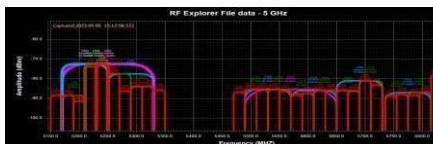
Band 40



Band 41



Wifi 2.4GHz



Wifi 5GHz

Exposure	Your Exposure in W/Kg	Recommended Exposure in W/Kg
Maximum Exposure	2.082	0.08

100 + Communication signals
Wi-Fi Bands 1,2, 3G, 4G & 5G
Harmonics were preventing
Communication and Access
Full bars, no connectivity!

PROBLEM

- Complaints of poor Connectivity
- Wi-Fi not working properly
- Very High Number of Signals
Very High Signal Strength
- Dangerously high EMR exposure

PLANNING

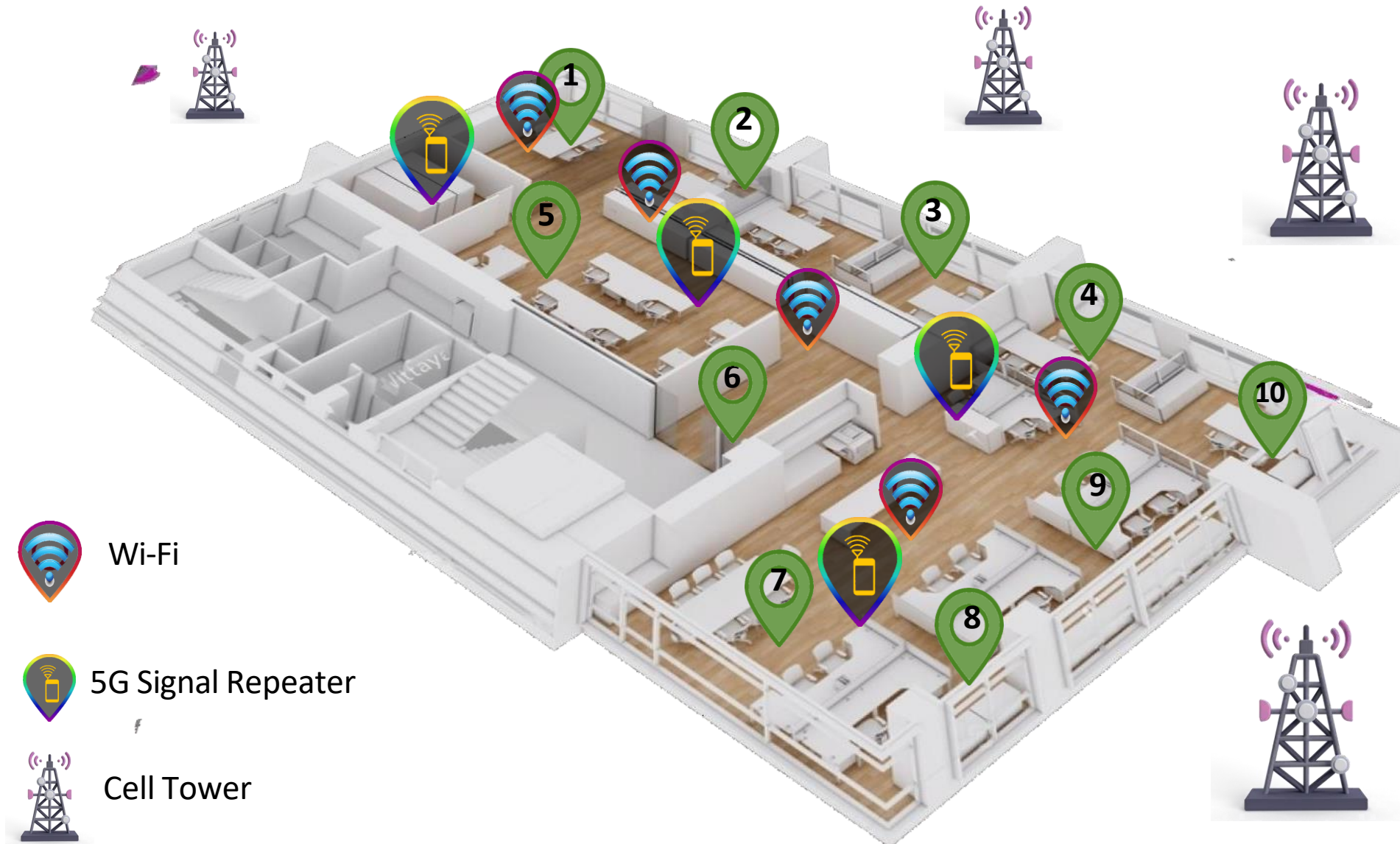
- Trubode analyzed Signal requirement,
- Communication needs & Work patterns,
- Wireless Access Points (5G & WiFi)
Mapped
- Solutions to absorb harmonics and regulate signals recommended



- We installed Anti-Radiation mesh on a retractable Roller blind.
- We installed Trubode patented coating on the walls.
- Products were Calibrated to dissipate Harmonics, reduce signal strength, minimize exposure and Improve Connectivity.

We brought down the Signal Strength, No.of Signals, Exposure and improved Connectivity

Safe after installation, the Trubode Guarantee



Sl no	Location	Max
1	Vinod	842
2	IKIGAI	560
3	Marketing	981
4	Finance	973
5	Sumit	870
6	Manjit	492
7	Vijay	934
8	Dharam	968
9	Rajeev	180
10	Manish	981

Safety with enhanced connectivity!

Connectivity

	Latency (ms)	Signal	
	42		Very Good
	44		Very Good
	62		Good

-GCI 020DBB13 - LTE -85 dBm

MCC: 405 MNC: 872 TAC: 58

LTE Reference Signal Received Power -85 dBm

LTE Reference Signal Received Quality -12 dB

Band Name WCS

RX Frequency 2329.8 MHz

Band Number 40

TX Frequency 2329.8 MHz

LTE Cell Identity 34454291

(EA/UA/A)RNCN 38948

LTE Physical Cell Identity 279

LTE Timing Advance 780 m

Provider Jio 4G

-GCI 0E93AF34 - LTE -85 dBm

MCC: 404 MNC: 10 TAC: 2335

LTE Reference Signal Received Power -85 dBm

LTE Reference Signal Received Quality -16 dB

Band Name IMT

RX Frequency 2136.5 MHz

Band Number 1

TX Frequency 1946.5 MHz

LTE Cell Identity 244559668

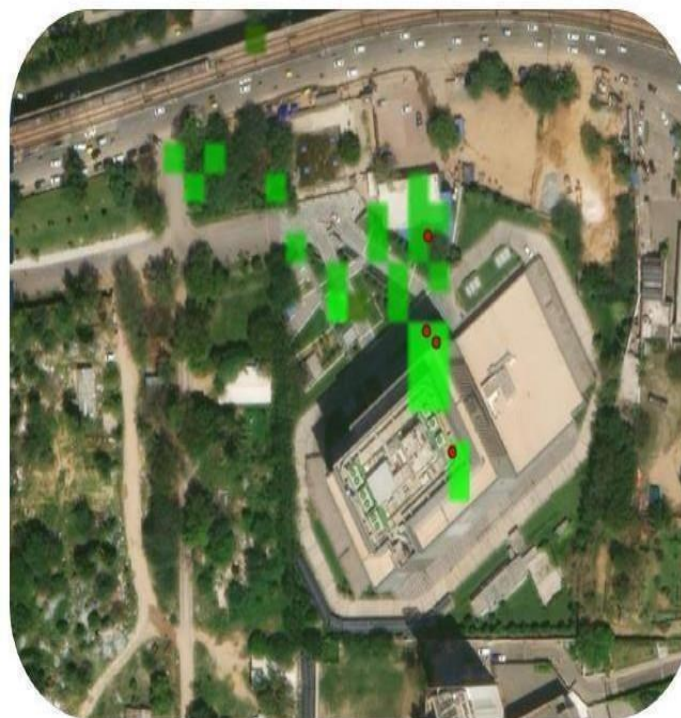
(EA/UA/A)RNCN 265

LTE Physical Cell Identity 346


Provider airtel

Exposure	Your Exposure in W/Kg	Recommended Exposure in W/Kg
Maximum Exposure	0.06	0.08

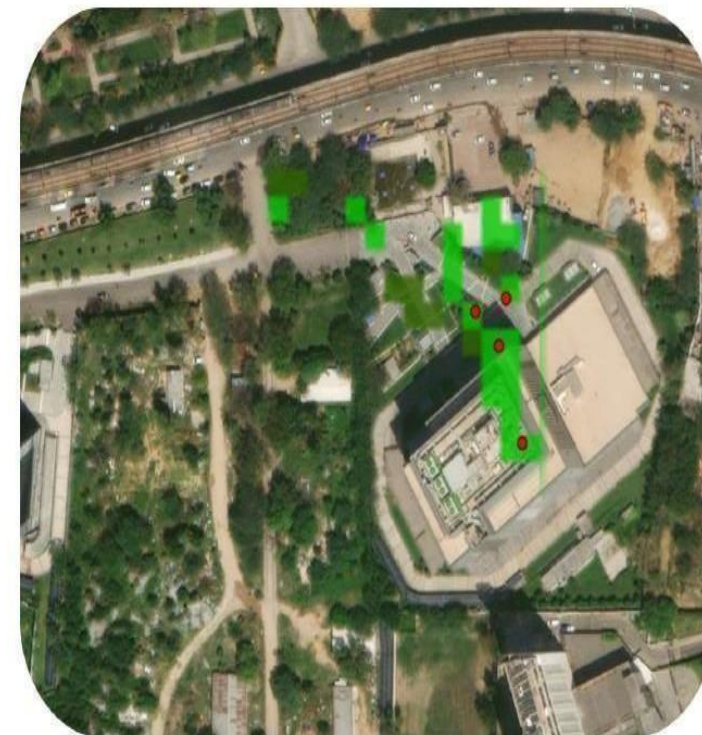
Airtel



Signal	Colour
-40 to -85 dBm	
-85 to -95 dBm	
-95 to -105 dBm	
-105 to -115 dBm	
-115 to -140 dBm	
< -140 dBm	
Towers	
Verified Tower	
Unverified Tower	

 - Cell Tower

Jio



Signal	Colour
-40 to -85 dBm	
-85 to -95 dBm	
-95 to -105 dBm	
-105 to -115 dBm	
-115 to -140 dBm	
< -140 dBm	
Towers	
Verified Tower	
Unverified Tower	

 - Cell Tower

What SKH said...

“I have been using trubode services for over 4 years now and have always found them to provide realistic solutions and deliver them to exceed expectations... In our SKH corporate office at Emaar Capital One, they installed their products and 'calibrated' our office to help overcome the weird problem of having full signal but poor connectivity. They improved connectivity and demonstrated significantly reduced exposure to EMR across the office.

Strongly recommend this to future customers of trubode.”



Rajeev Pandiya

Director of Finance, SKH Group



Trubode

95431 95431

www.trubode.com