

**We conducted an audit to measure EMR exposure level as advised by Bosch**

**Assessment & Validation**

**Bosch, Bangalore Koramangala**

**We conducted Re-assessment to study EMF exposure levels post installation of LS Products**

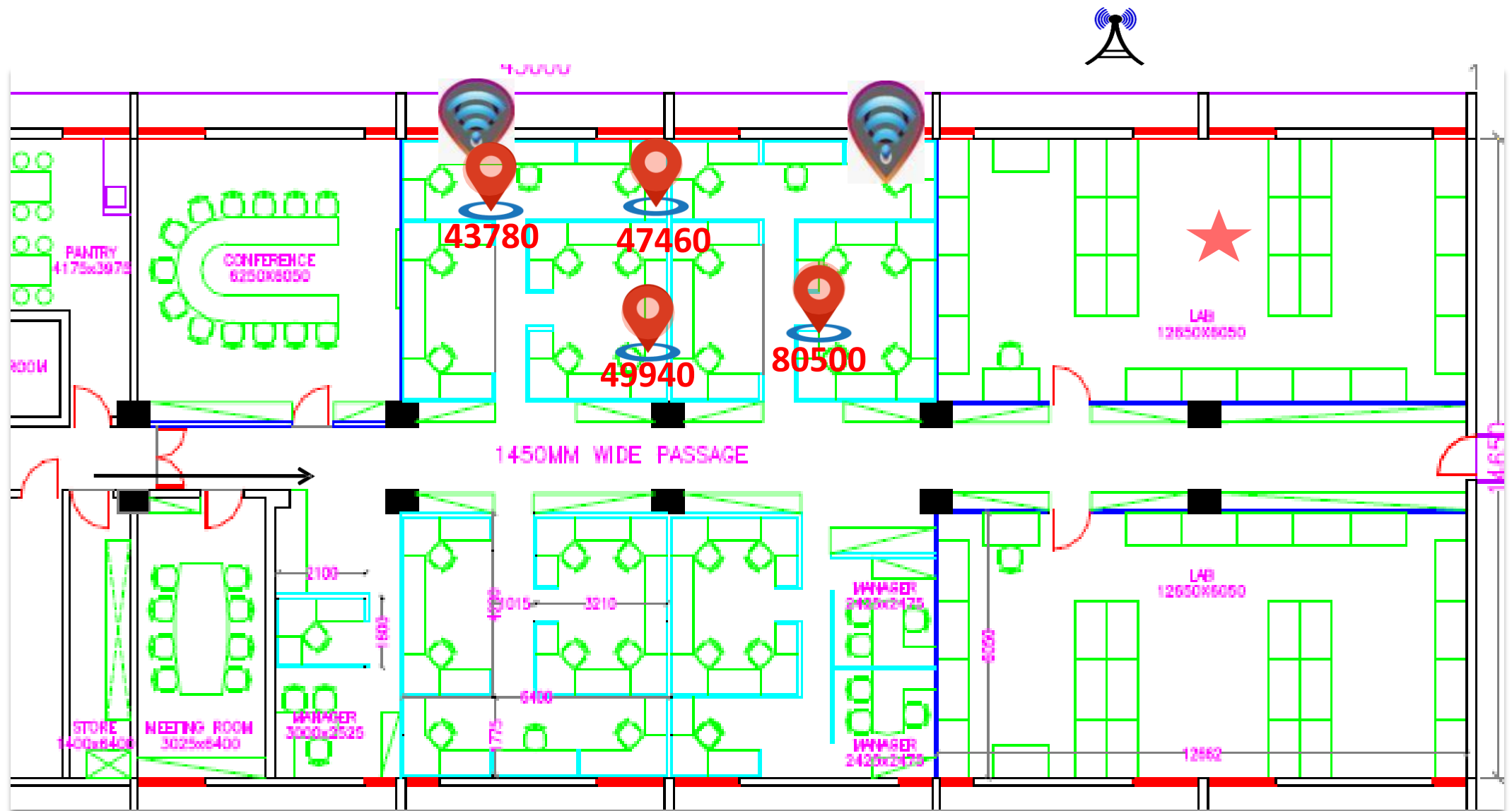


## **Case Study**

**Bosch, Bangalore Koramangala**



**We conducted  
an Audit to  
measure EMR  
exposure level  
as advised by  
Bosch**



**Ambient Radiation levels were Extremely High**

The background of the slide features several concentric circles. A thick purple circle is centered on the page, enclosing the main text. Behind it are several thinner, light gray concentric circles of increasing radii, creating a ripple effect.

**Trubode  
recommended  
solutions to make  
environment safer!**

## Trubode recommended installation of Anti-Radiation Mesh, Film and Coat in identified area



### **PATENTED\* COATING**

Patented\* coating reduces EMR  
by up to **99%**



### **SPECIALLY TREATED MESH**

Up to **99.999% attenuation** and  
aesthetically appealing



### **SPECIALLY TREATED FILMS**

Reduces **EMR** up to **99.9%** and  
blocks up to **99% UV radiation**



Terrace



Workstation



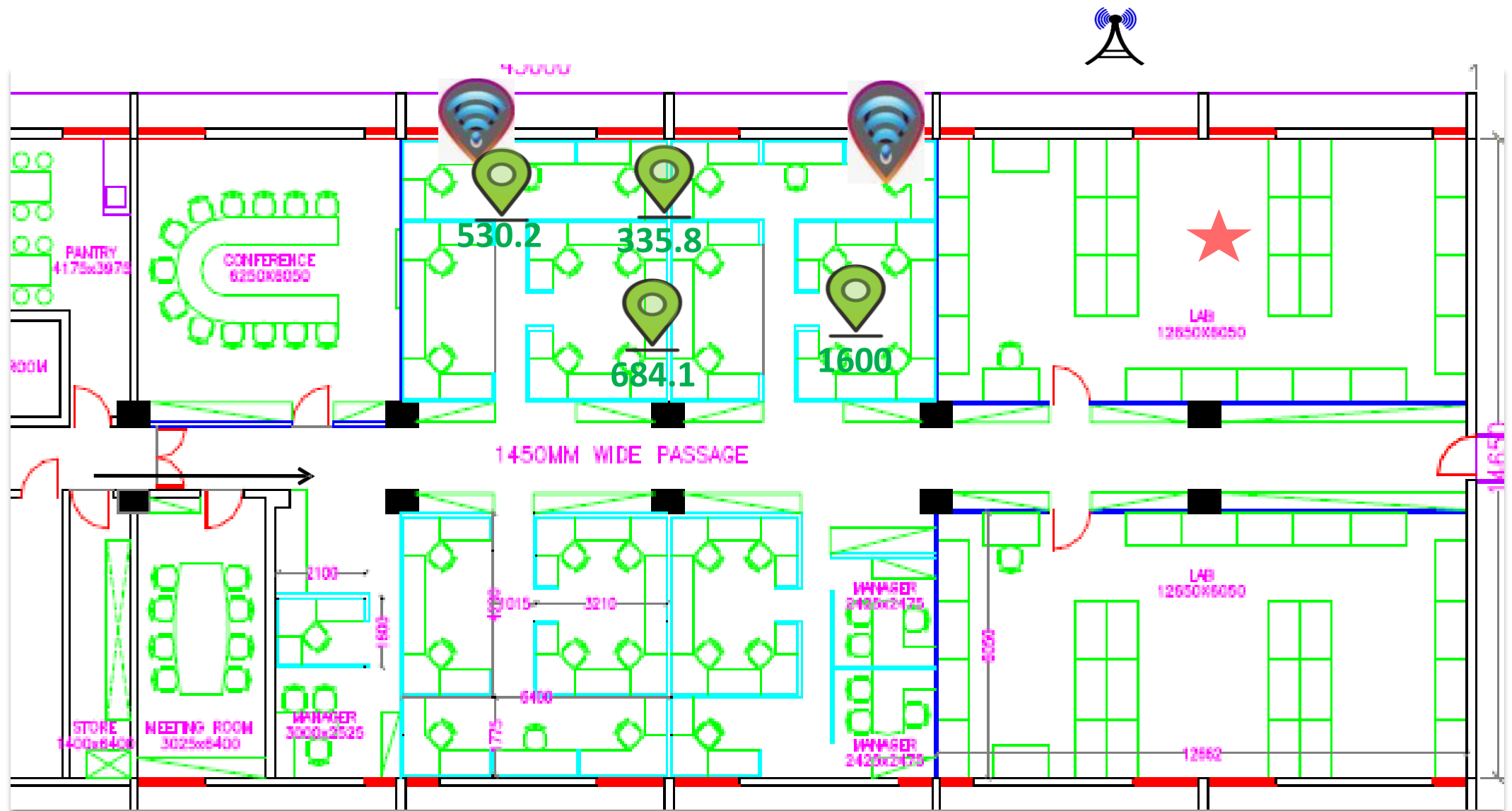
**Terrace**



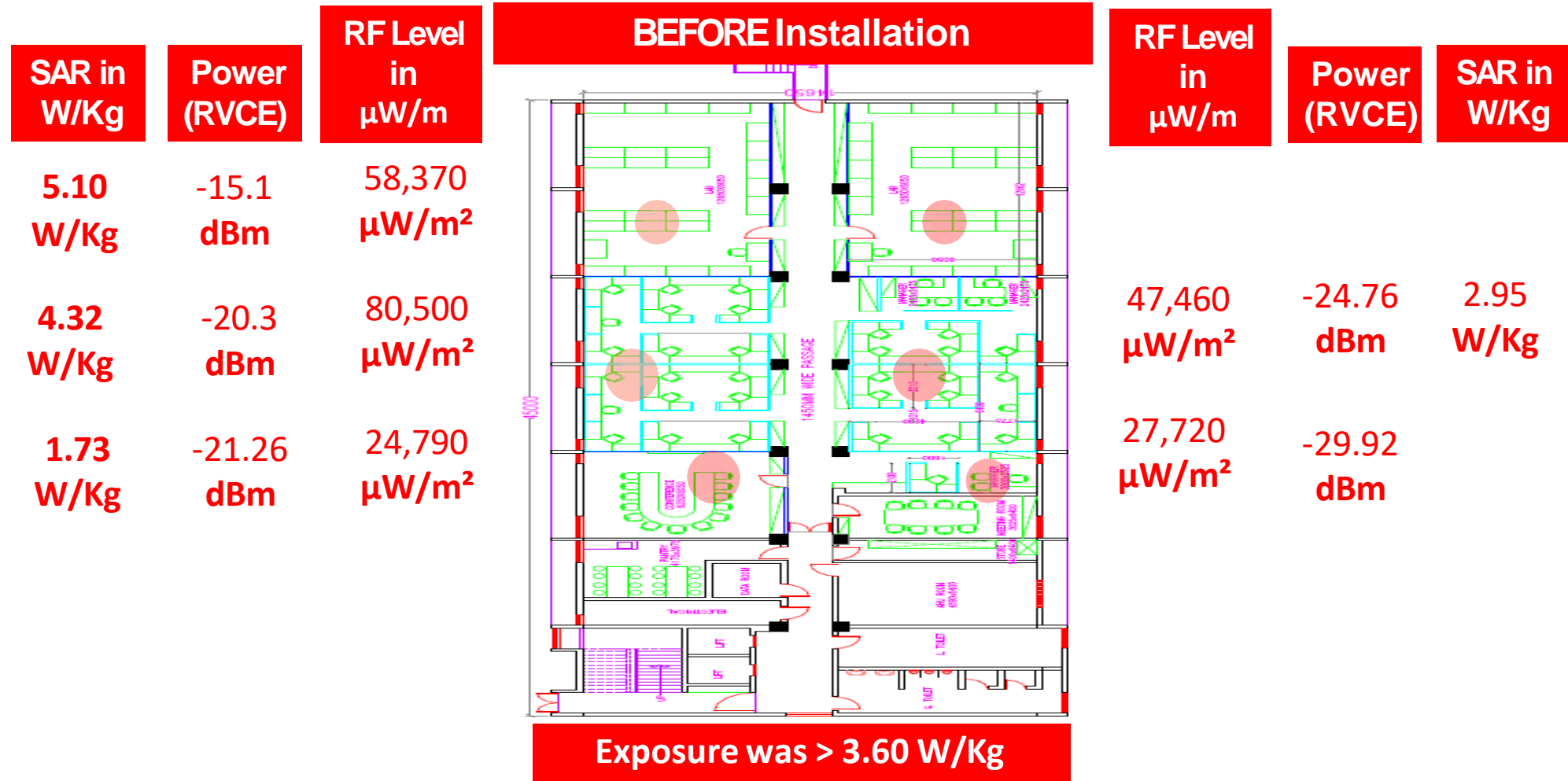
**Workstation**

**We conducted  
Re-assessment to  
study EMF  
Exposure levels  
post installation  
of trubode  
products**





The Exposure was down to safe levels\*!

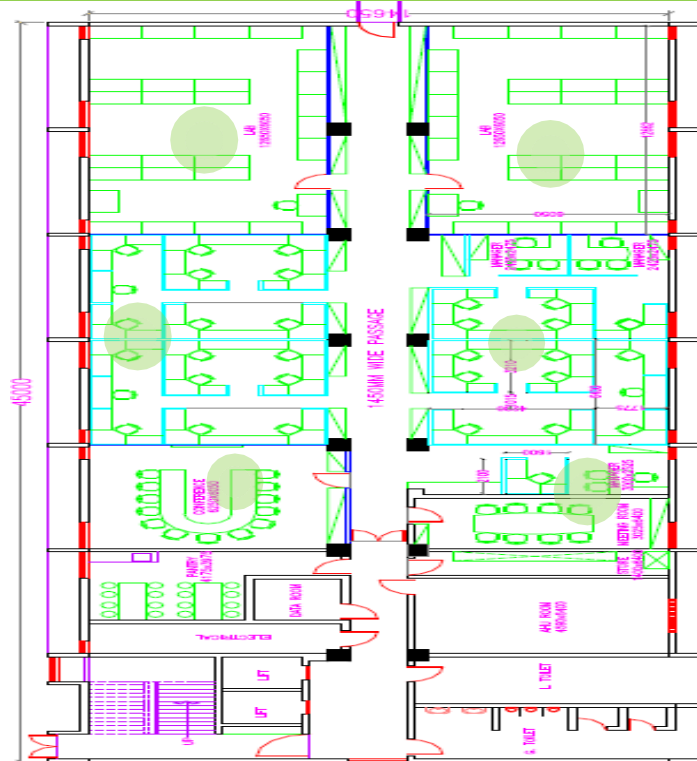


Safe Exposure to Radiation: **0.08 W/Kg ICNIRP Standards**

Results achieved without compromising connectivity

## AFTER Installation

SAR	Power Density	RF Level
0.03 W/Kg 5.10	-32.19 dBm -15.1	500 $\mu\text{W}/\text{m}^2$ 58,370
0.03 W/Kg 4.32	-37.01 dBm -20.3	517 $\mu\text{W}/\text{m}^2$ 80,500
0.07 W/Kg 1.73	-40.21 dBm -21.26	223 $\mu\text{W}/\text{m}^2$ 24,790



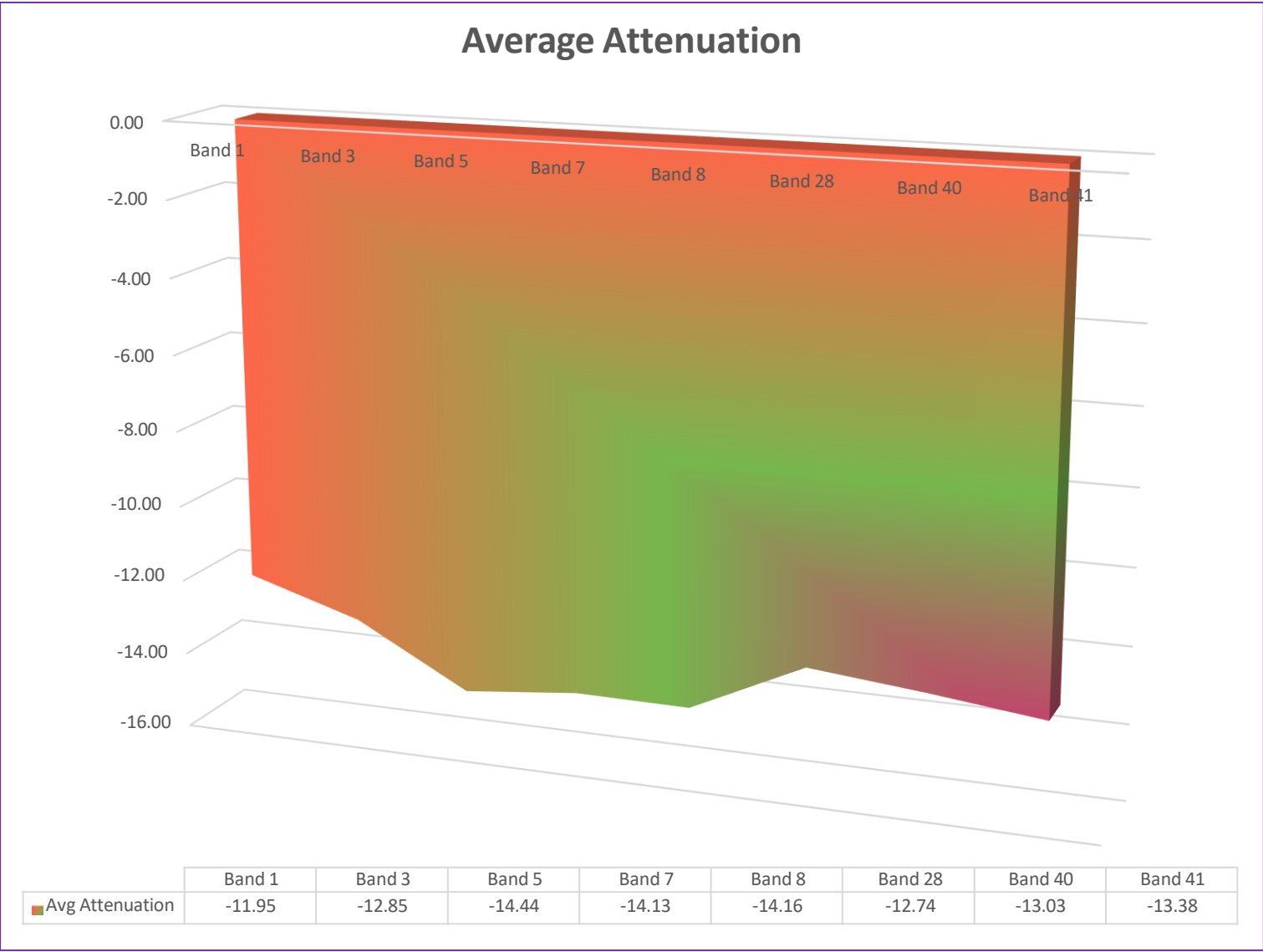
RF Level	Power (RVCE)	SAR
789.3 $\mu\text{W}/\text{m}^2$	-42.21 dBm	0.02 W/Kg
335.8 $\mu\text{W}/\text{m}^2$	-37.14 dBm	0.04 W/Kg
47,460	-24.76	2.95
994 $\mu\text{W}/\text{m}^2$	-37.8 dBm	
27,720	-29.92	

## Pre-Audit Levels

**Exposure reduced to < 0.03 W/Kg  
(99% Reduction)**

**Safe Exposure to Radiation: 0.08 W/Kg ICNIRP Standards**

**Results achieved without compromising connectivity**



We have worked with trubode for an EMR audit and solution-based deployment to reduce the electromagnetic radiation levels resulting from mobile towers closer to the workstation zones. We found a significant amount of drop levels after using Vibrant products. Our exposure levels are now significantly lower than those that the ICNIRP suggests.



**Dr. Krishnamurthy Subramanya**  
**Project & Facilities Manager, Bosch**